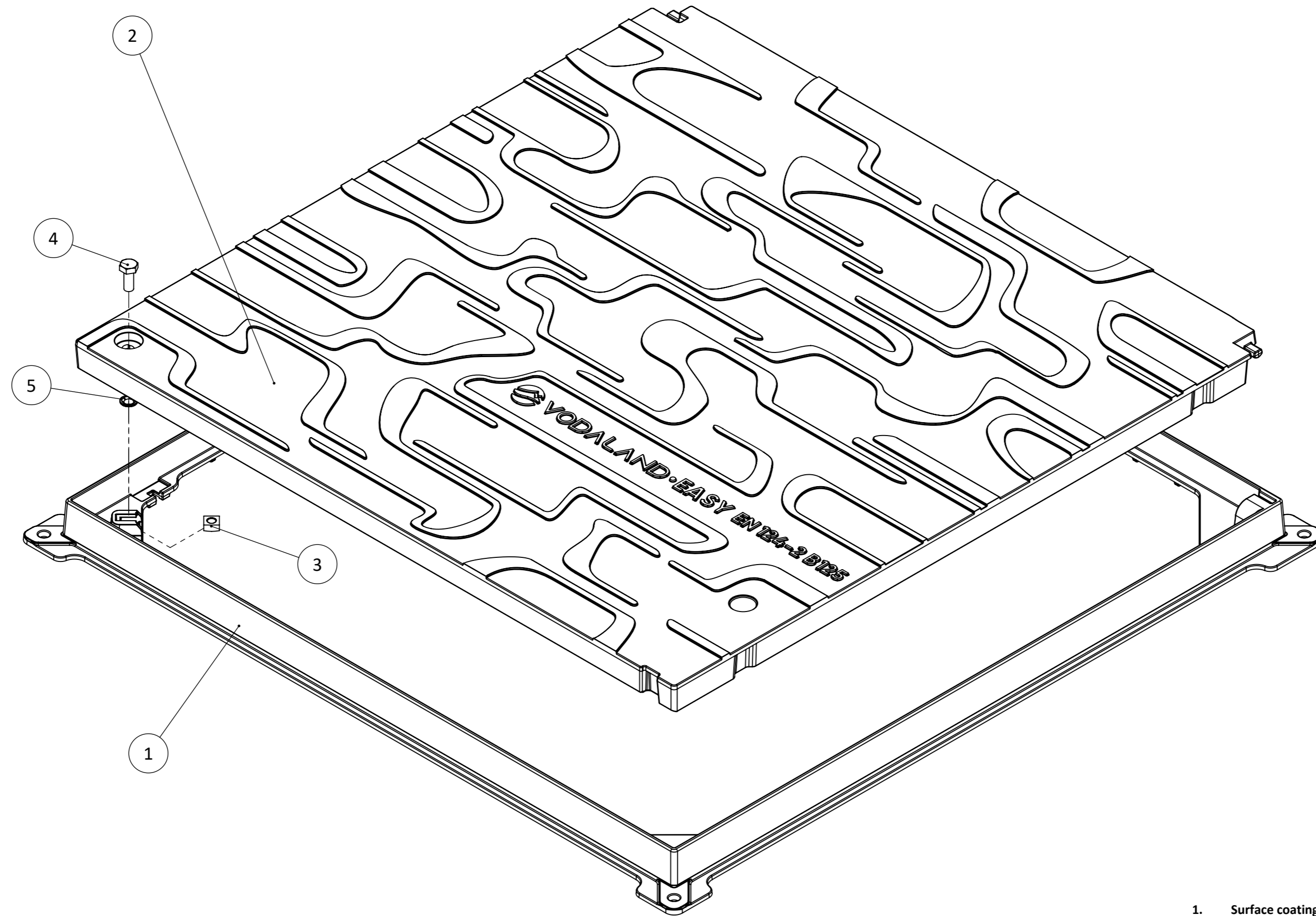


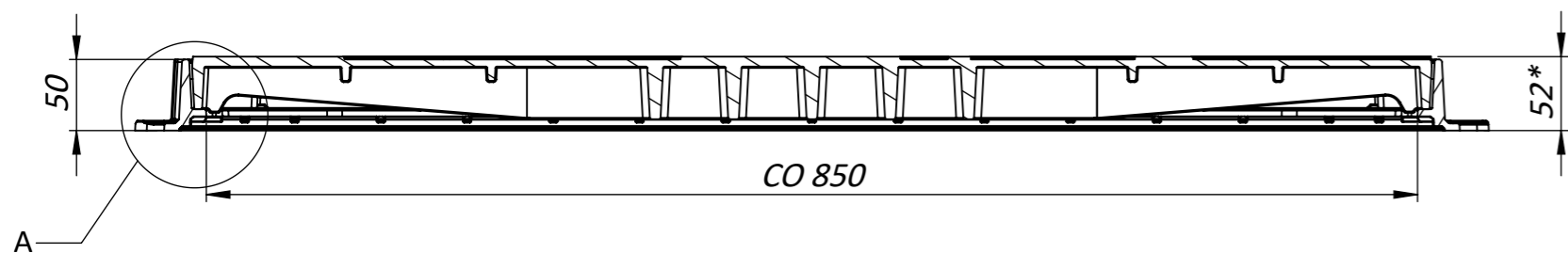
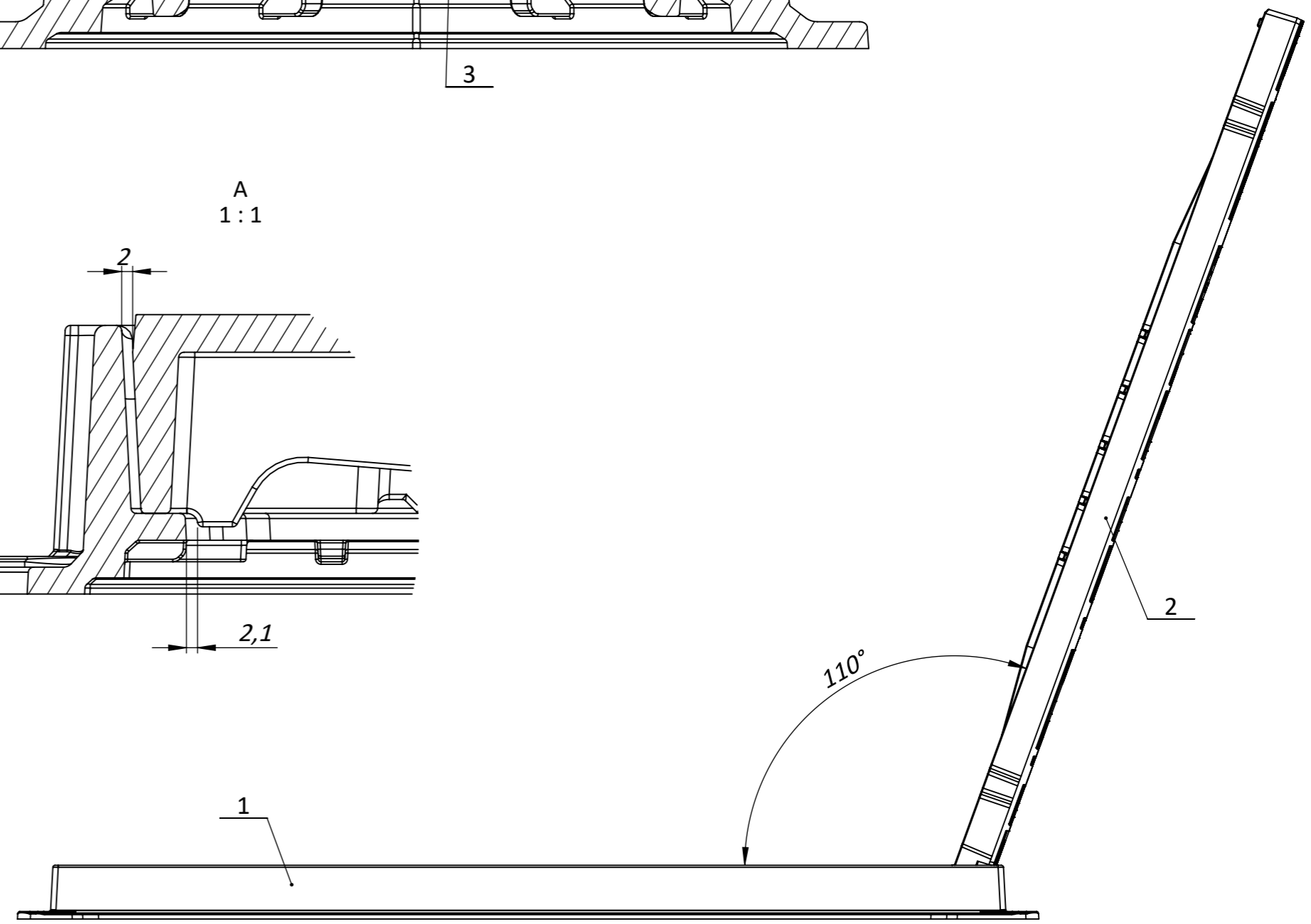
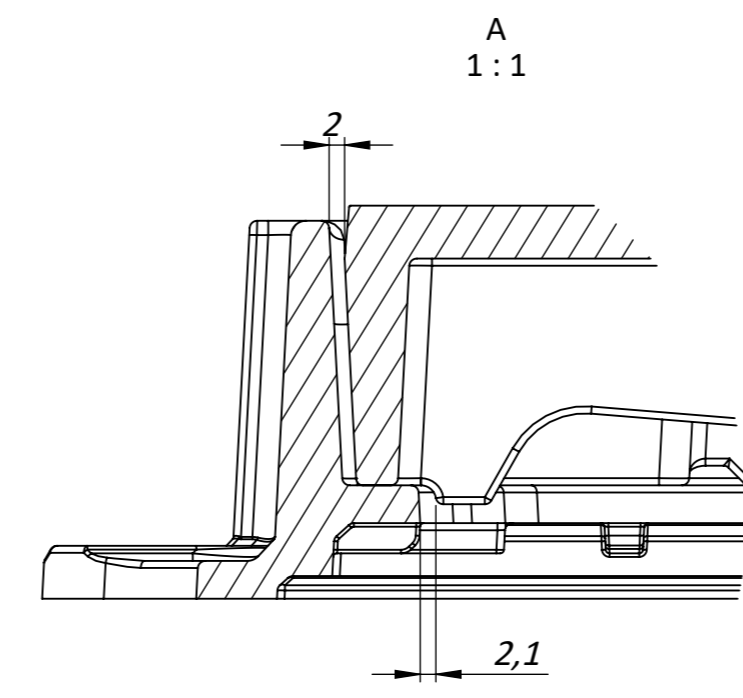
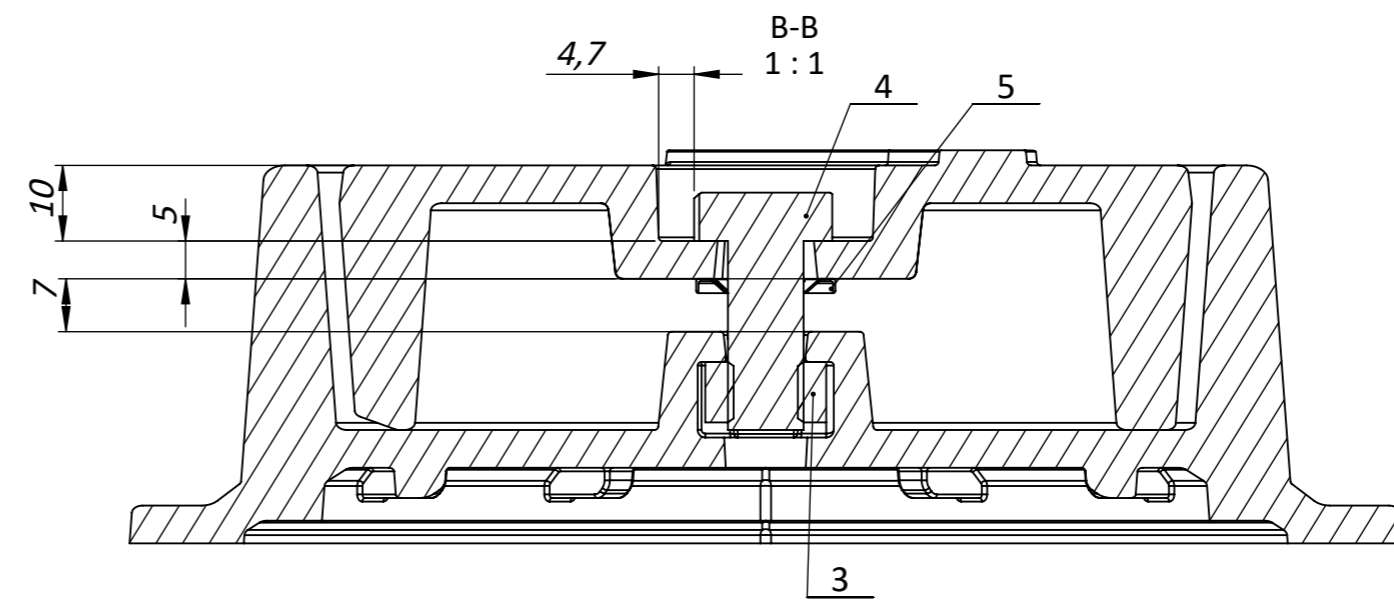
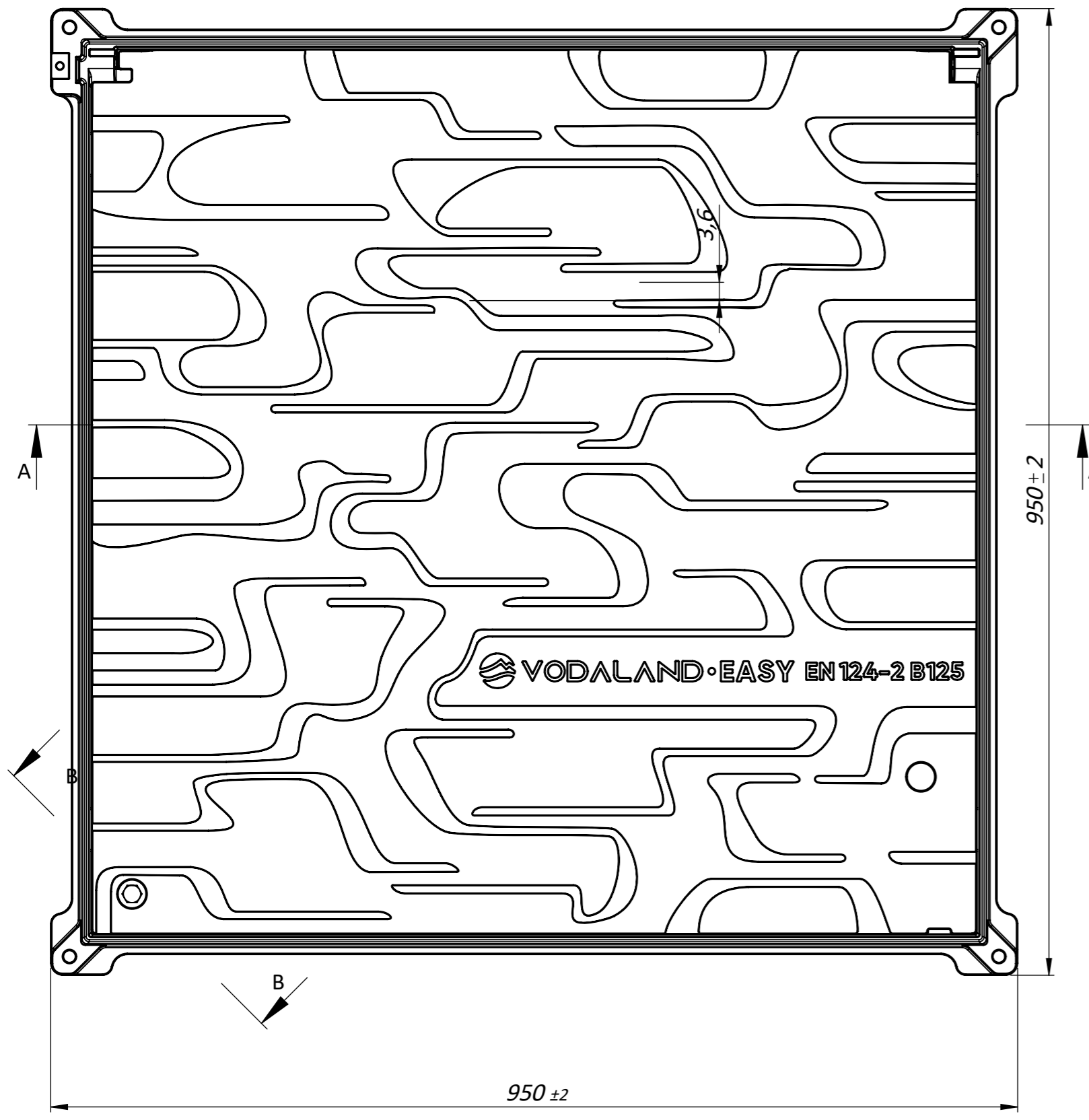
Pic.	Name	Article	QTY
1	Cast iron frame of manhole 720x720 DN650 square light B125	35457-38 f	1
2	Cast iron cover of manhole 720x720 DN650 square light B125	35457-38 c	1
3	Square nut DIN 557 M10 in stainless steel		1
4	Bolt M10x25 DIN 933 (EN ISO 4017) stainless steel		1
5	Lock washer STARLOCK M10		1



1. Surface coating: bitumen mix black matt paint with anticorrosion features
2. Tolerance-EN 8062/weight +/-3%
3. Mark the date of manufacture of the hatches in the format MMY (month, year).
4. Mark the article number - EN 124 B125

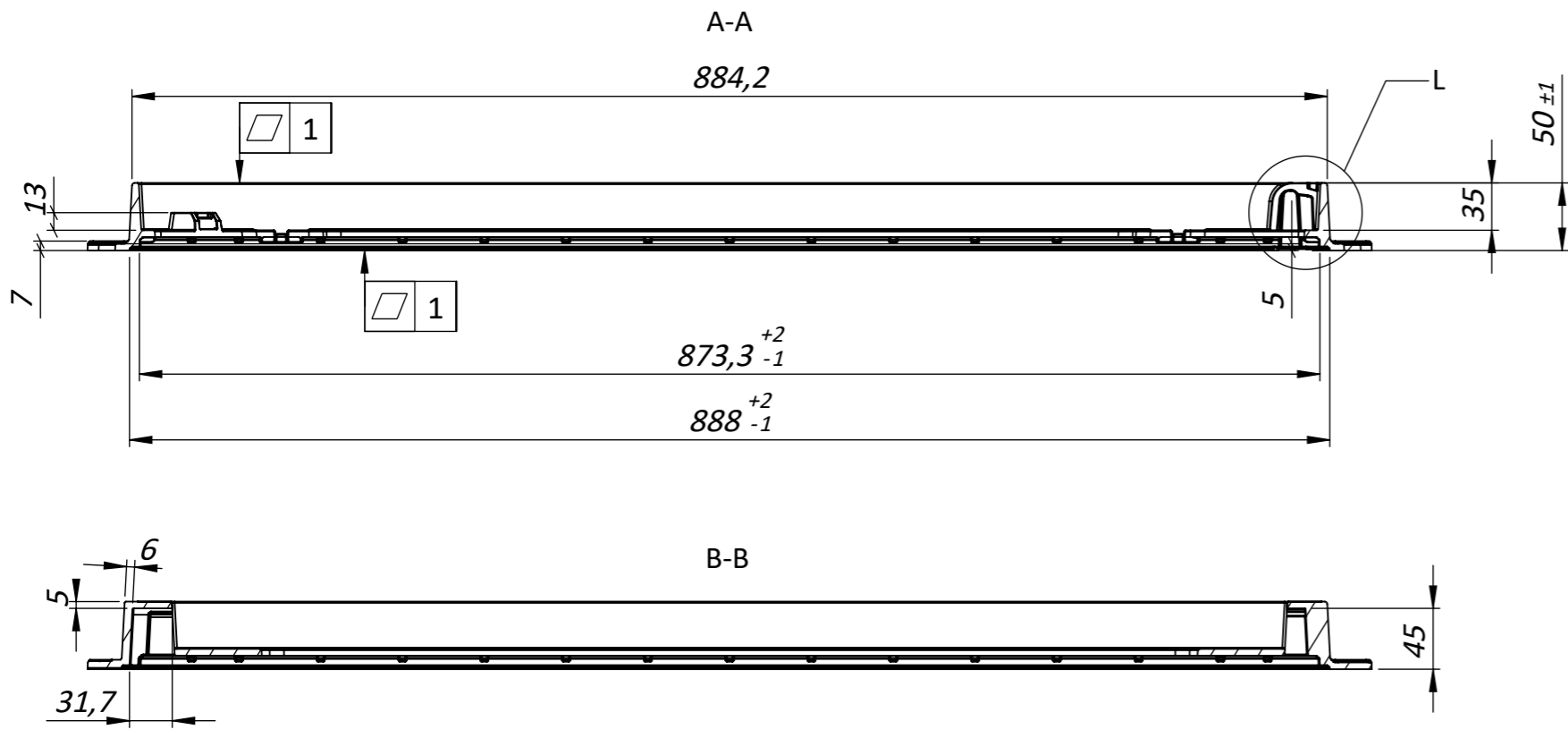
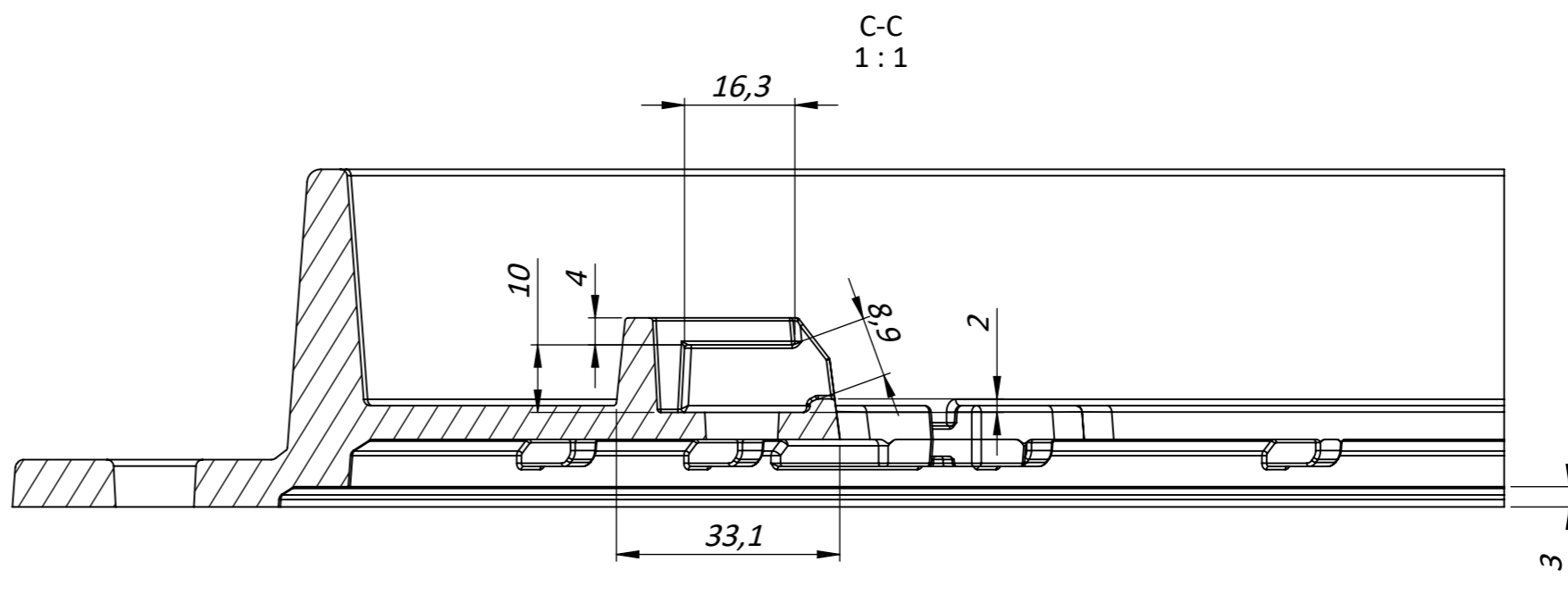
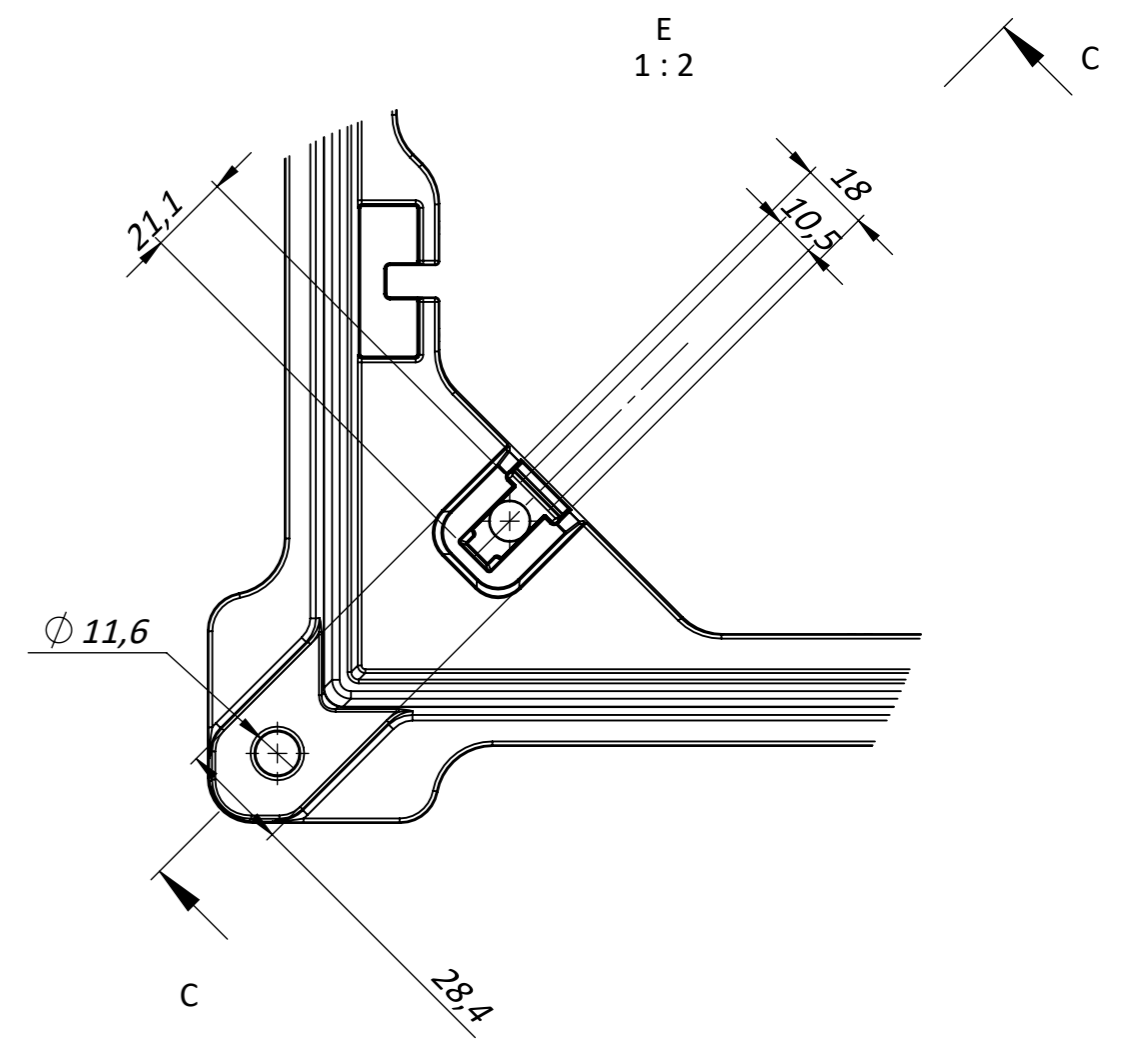
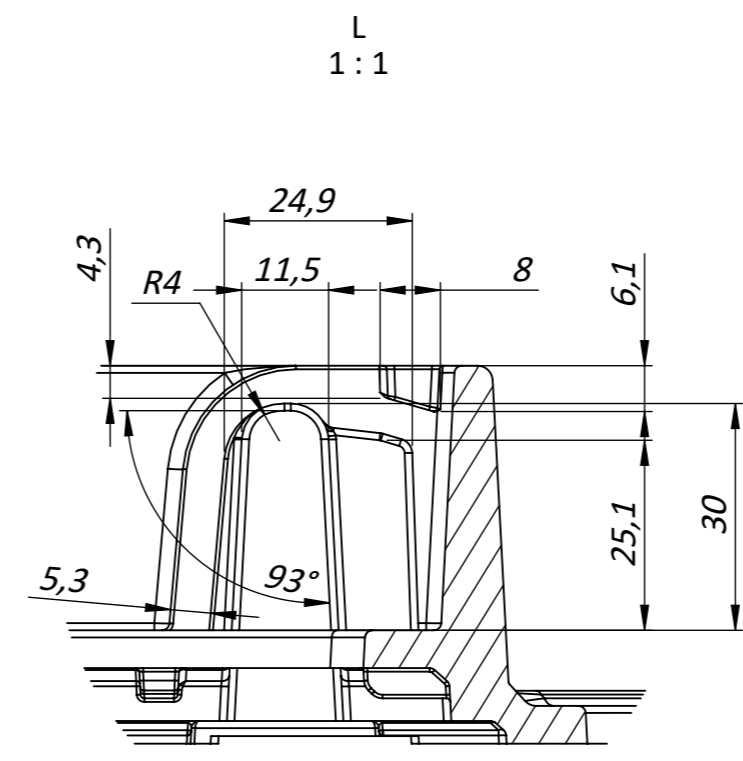
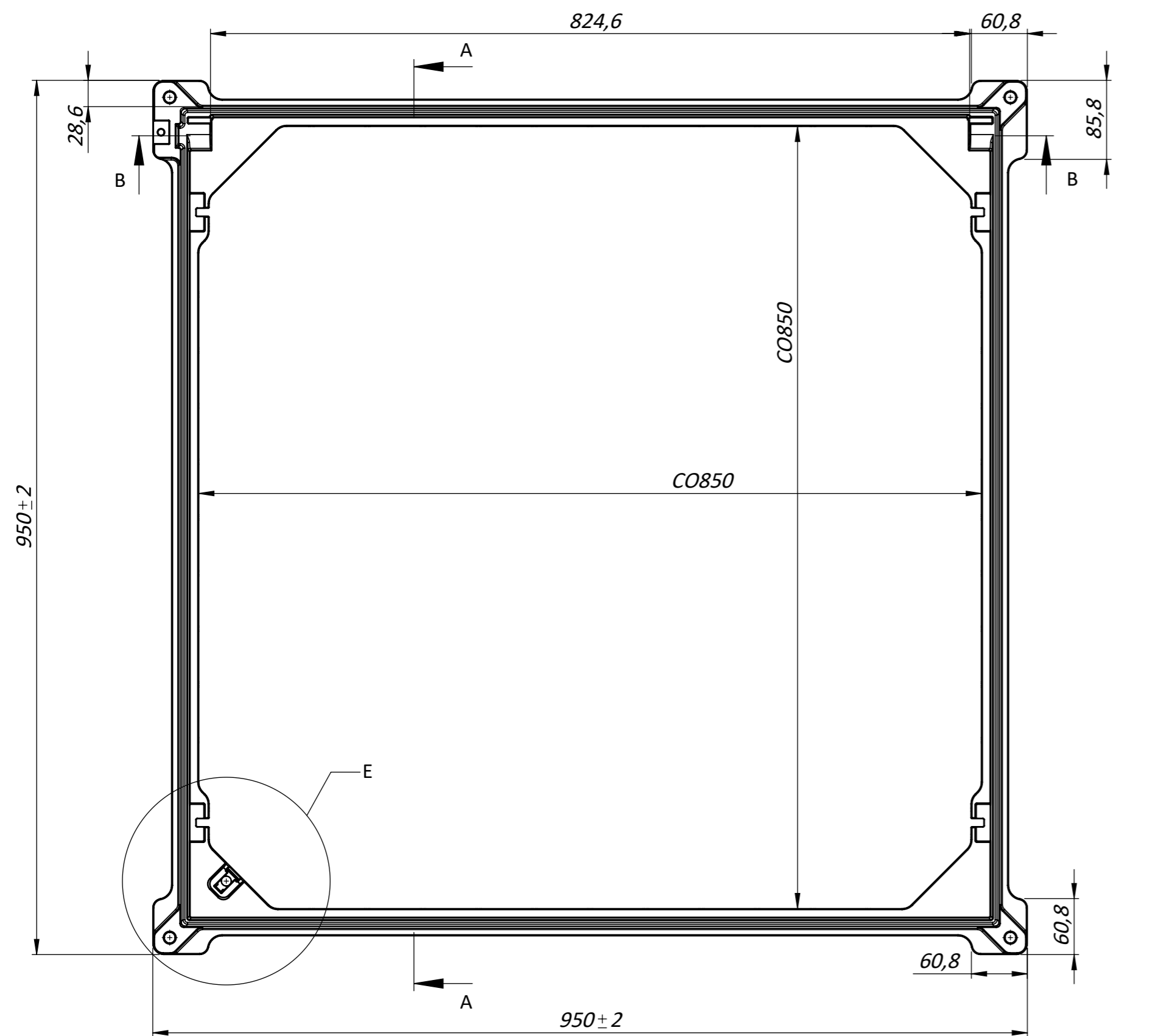
UNLESS OTHERWISE SPECIFIED: DIMENSIONS ARE IN MILLIMETERS SURFACE FINISH: TOLERANCES: ISO 2768-C LINEAR: ANGULAR:		FINISH:		DO NOT SCALE DRAWING		REVISION	
DRAWN M. Vasylyk		SIGNATURE <i>[Signature]</i>		DATE 22.04.25		TITLE: Cast iron manhole 950x950 DN850 square light B125	
CHK'D M. Kuntso		MFG O. Tsyurak		MATERIAL: GGG50 DIN 1693		ARTICLE: 35459-38	
APPV'D		Q.A. D. Negru		WEIGHT: 68.49 kg		SCALE: 1:4	
						A2	
						SHEET 1 OF 6	

PIC	Name	Article	QTY
1	Cast iron frame of manhole 950x950 DN850 square light B125	35457-38 f	1
2	Cast iron cover of manhole 950x950 DN850 square light B125	35457-38 c	1
3	Square nut DIN 557 M10 in stainless steel		1
4	Bolt M10x25 DIN 933 (EN ISO 4017) stainless steel		1
5	Lock washer STARLOCK M10		1



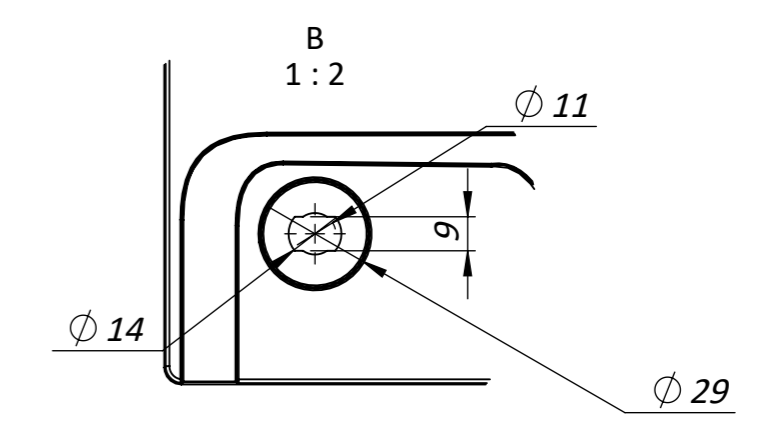
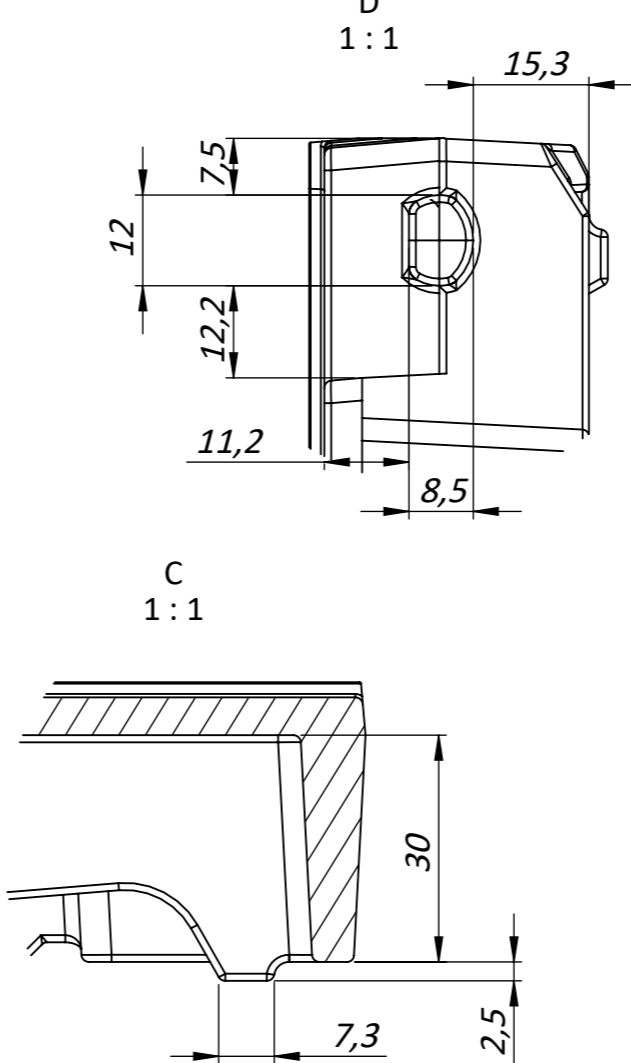
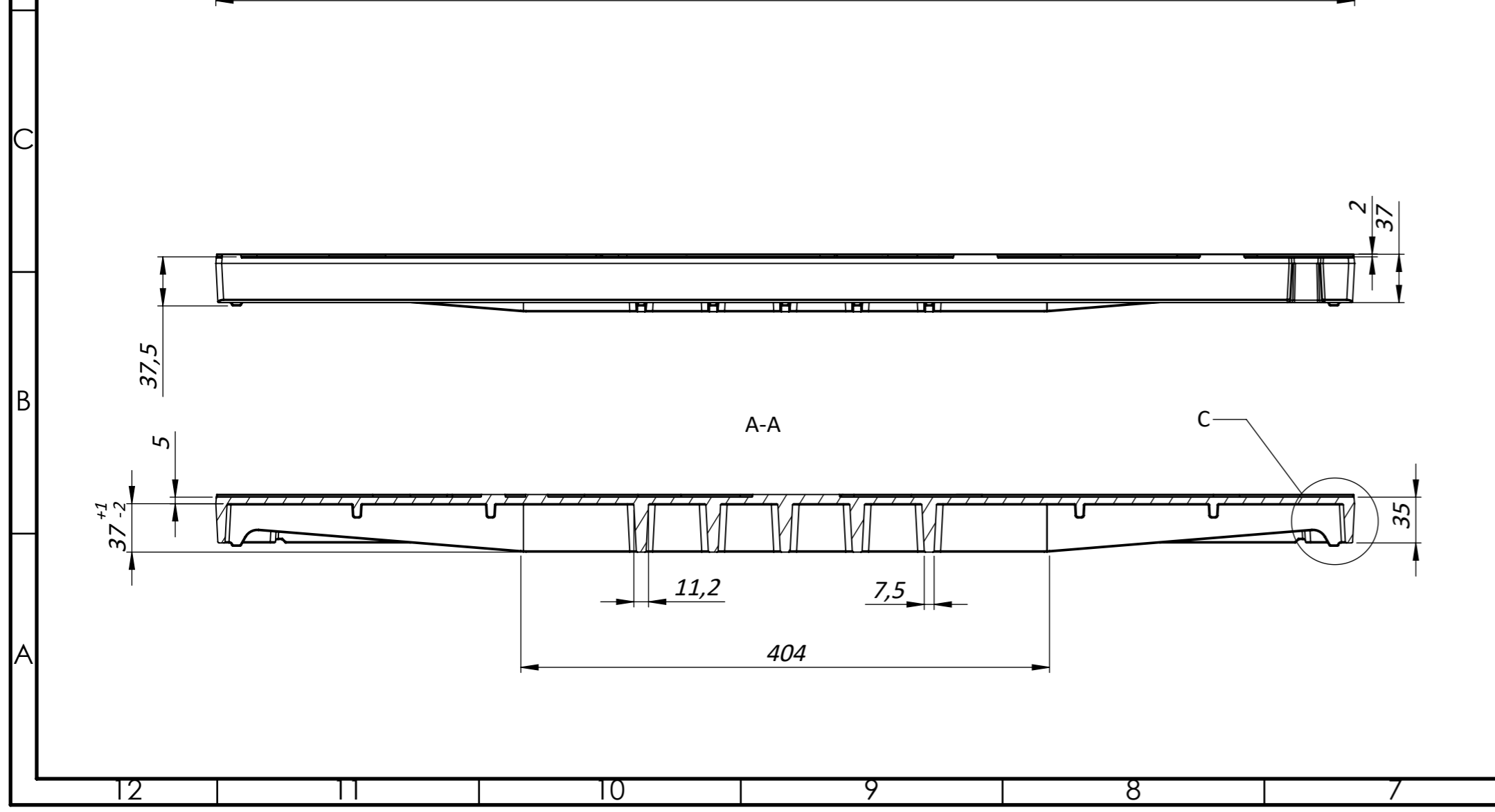
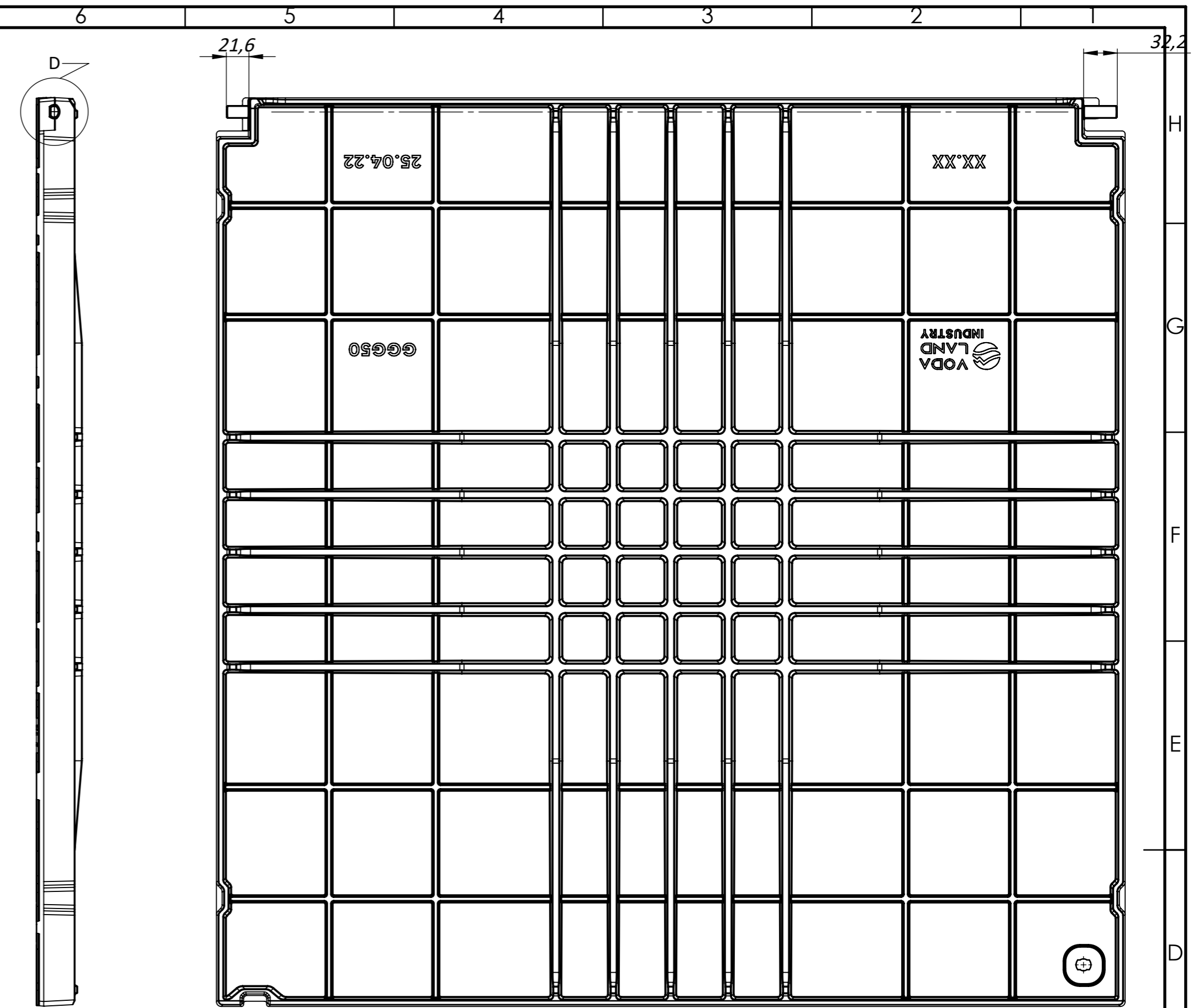
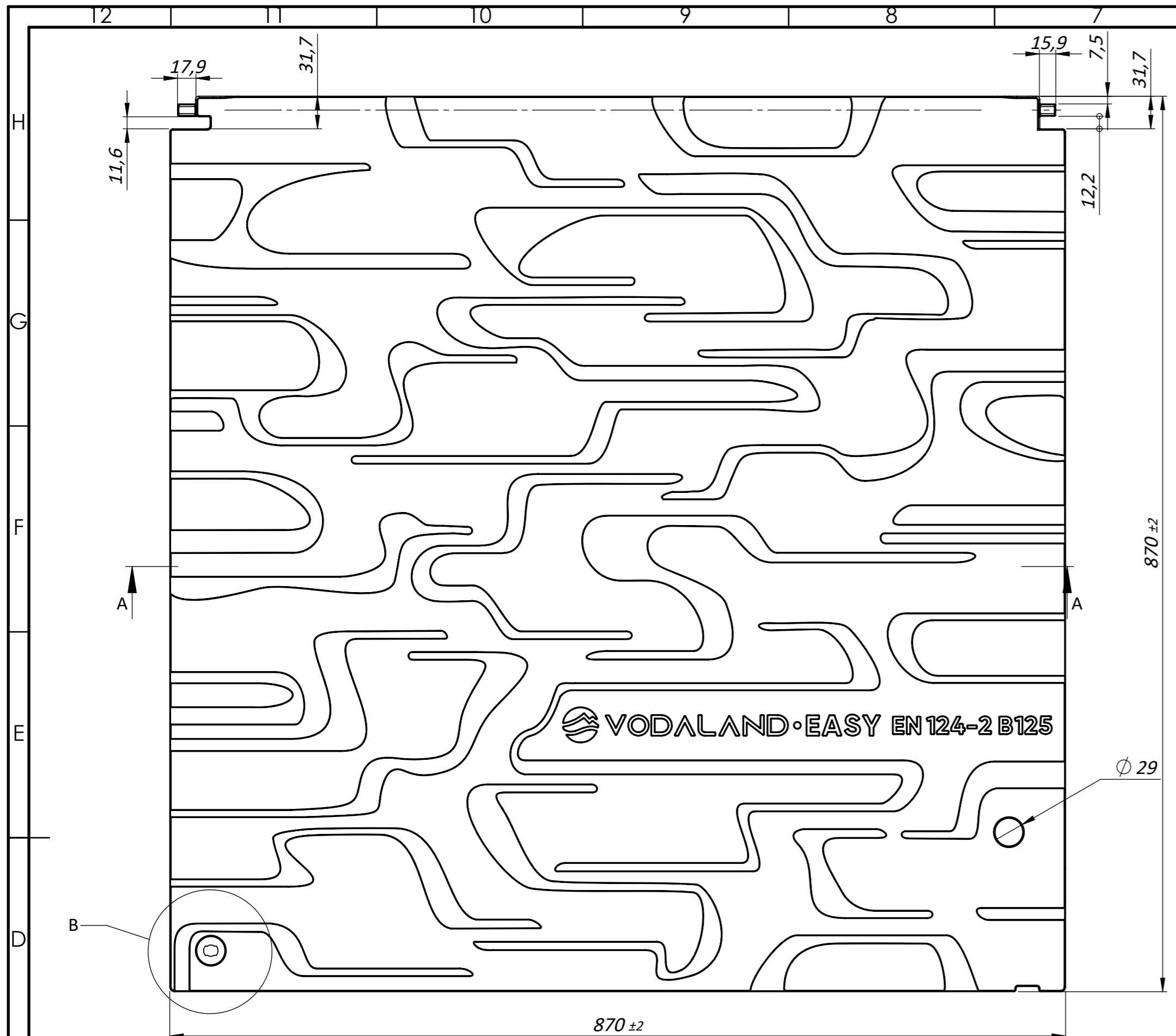
1. Surface coating: bitumen mix black matt paint with anticorrosion features
2. Tolerance-EN 8062/weight +/-3%
3. Mark the date of manufacture of the hatches in the format MMY (month, year).
4. Mark the article number - EN 124 B125

UNLESS OTHERWISE SPECIFIED: DIMENSIONS ARE IN MILLIMETERS SURFACE FINISH: TOLERANCES: ISO 2768-C LINEAR: ANGULAR:			FINISH:		DO NOT SCALE DRAWING		REVISION	
DRAWN: M. Vasylyk			SIGNATURE: <i>[Signature]</i>		DATE: 22.04.25		TITLE: Cast iron manhole 950x950 DN850 square light B125	
CHK'D: M. Kuntso			MFG: O. Tsyurak		Q.A: D. Negru		MATERIAL: GGG50 DIN 1693	
APPV'D: <i>[Signature]</i>			WEIGHT: 68.49 kg		SCALE: 1:5		ARTICLE: 35459-38	
A2			SHEET 2 OF 6					



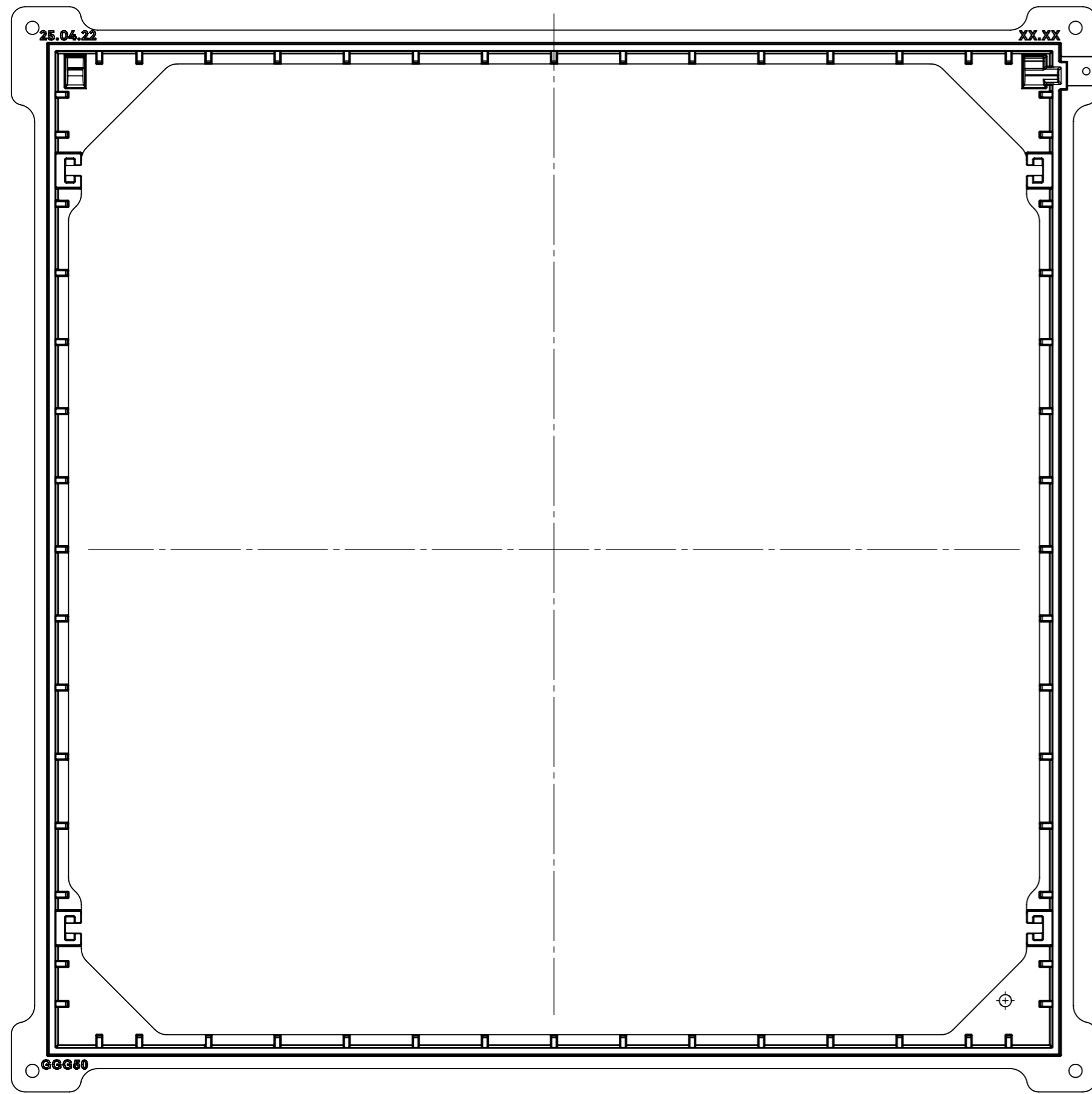
1. Surface coating: bitumen mix black matt paint with anticorrosion features
2. Tolerance-EN 8062/weight +/-3%
3. Mark the date of manufacture of the hatches in the format MMY (month, year).
4. Mark the article number - EN 124 B125

UNLESS OTHERWISE SPECIFIED: DIMENSIONS ARE IN MILLIMETERS SURFACE FINISH: TOLERANCES: ISO 2768-C LINEAR: ANGULAR:			FINISH:	DO NOT SCALE DRAWING		REVISION
DRAWN: M. Vasylyk			SIGNATURE: <i>[Signature]</i>	DATE: 22.04.25	TITLE: Cast iron frame of manhole 950x950 DN850 square light B125	
CHK'D: M. Kuntso			MATERIAL: GGG50 DIN1693		Load class: B125	
APPV'D: <i>[Signature]</i>			WEIGHT: 12.51 kg		ARTICLE: 35459-38 f	
MFG: O. Tsyurak			SCALE: 1:5		SHEET 3 OF 6	
Q.A: D. Negru					A2	

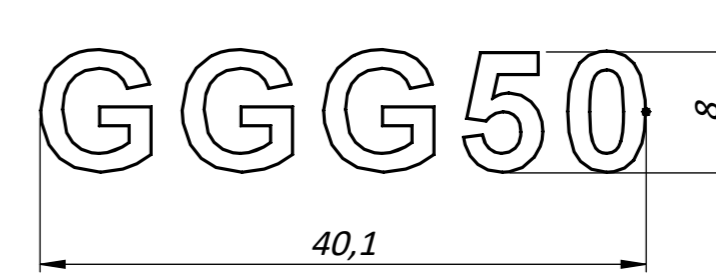


1. Surface coating: bitumen mix black matt paint with anticorrosion features
2. Tolerance-EN 8062/weight +/-3%
3. Mark the date of manufacture of the hatches in the format MMY (month, year).
4. Mark the article number - EN 124 B125

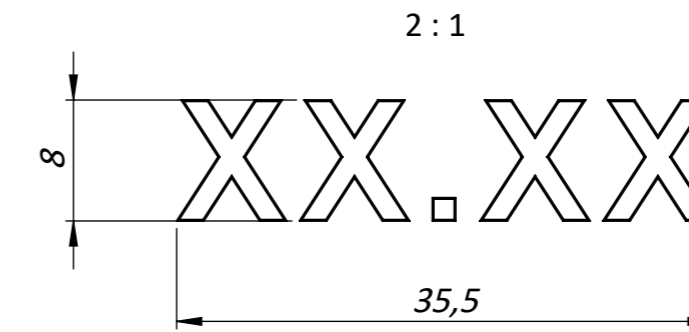
UNLESS OTHERWISE SPECIFIED: DIMENSIONS ARE IN MILLIMETERS SURFACE FINISH: TOLERANCES: ISO 2768-C LINEAR: ANGULAR:			FINISH:	DO NOT SCALE DRAWING		REVISION
NAME	SIGNATURE	DATE				
DRAWN M. Vasylyk		22.04.25				
CHK'D M. Kuntso						
APPV'D						
MFG O. Tsyurak						
Q.A D. Negru			MATERIAL:	TITLE:		
			GGG50 DIN1693	Cast iron cover of manhole 950x950 DN850 square light B125		
			WEIGHT: 55.94 kg	Load class: B125		
			SCALE: 1:4	ARTICLE: 35459-38 c		
				SHEET 4 OF 6		



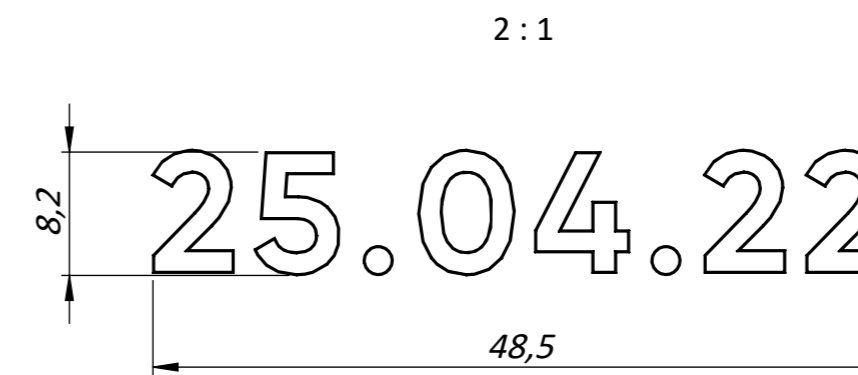
1. Material 2 : 1



2. Marker of date of manufacture of the hatches in the format MMY (month, year) (bottom)



3. Date of product (bottom)

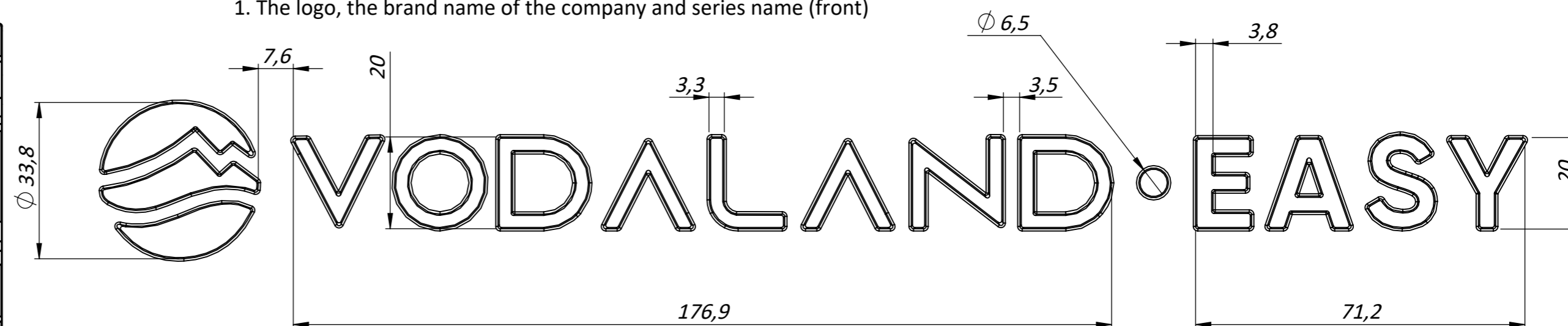


1. Surface coating: bitumen mix black matt paint with anticorrosion features
2. Tolerance-EN 8062/weight +/-3%
3. Mark the date of manufacture of the hatches in the format MMY (month, year).
4. Mark the article number - EN 124 B125

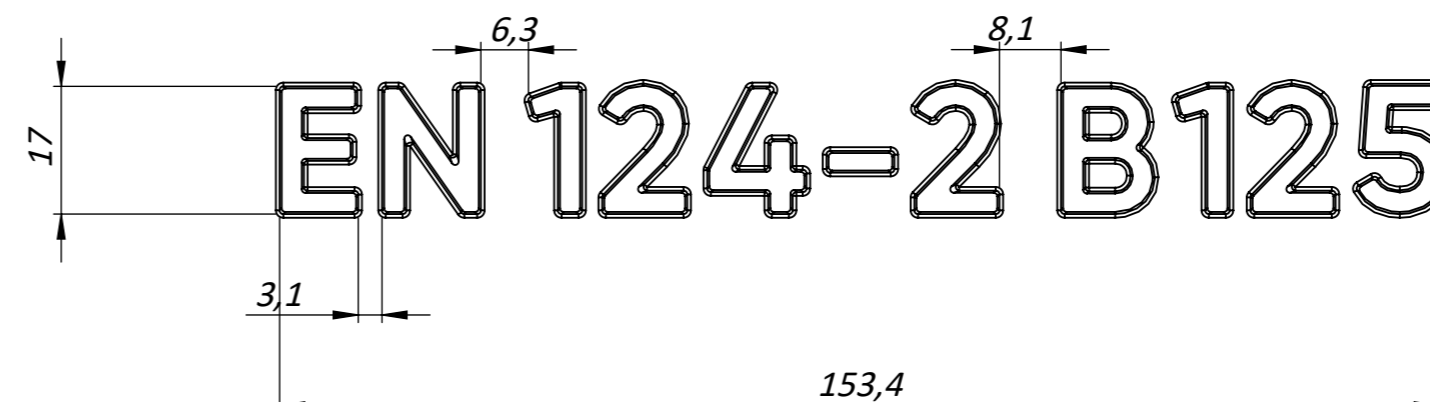
UNLESS OTHERWISE SPECIFIED: DIMENSIONS ARE IN MILLIMETERS SURFACE FINISH: TOLERANCES: ISO 2768-C LINEAR: ANGULAR:				FINISH:		DO NOT SCALE DRAWING		REVISION	
DRAWN		M. Vasylyk		SIGNATURE		DATE		TITLE:	
CHK'D		M. Kuntso				22.04.25		Cast iron frame of manhole 950x950 DN850 square light B125	
APPV'D								Load class: B125	
MFG		O. Tsyurak		MATERIAL:		ARTICLE:		A2	
Q.A		D. Negru		GGG50 DIN1693		35459-38 f			
				WEIGHT: 12.51 kg		SCALE: 1:4		SHEET 5 OF 6	

List of inscriptions:

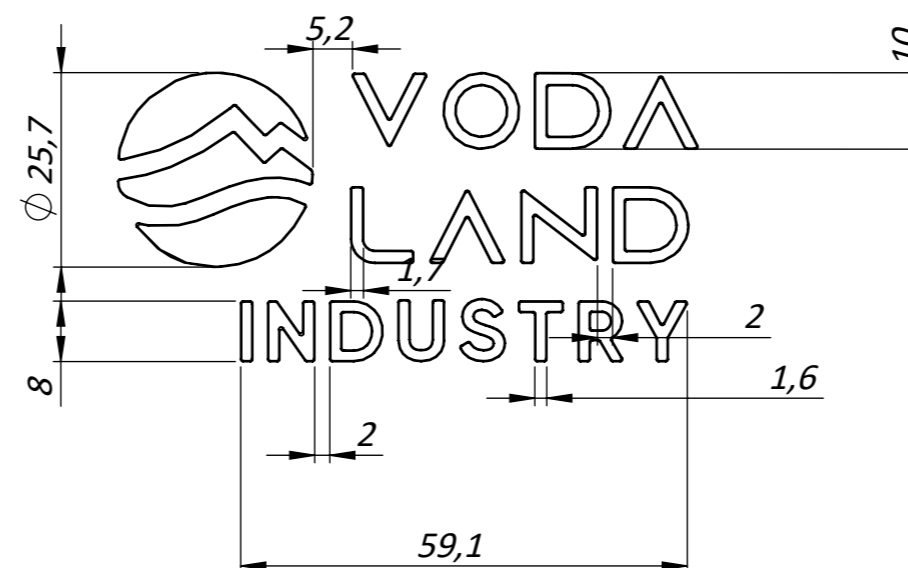
1. The logo, the brand name of the company and series name (front)



2. Indication of the normative document and load class (front)



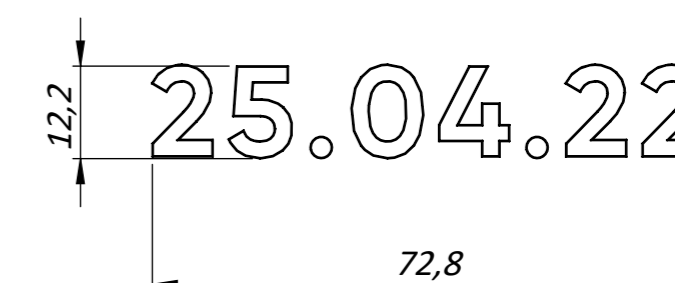
3. The logo, the brand name of the company and series name (bottom)



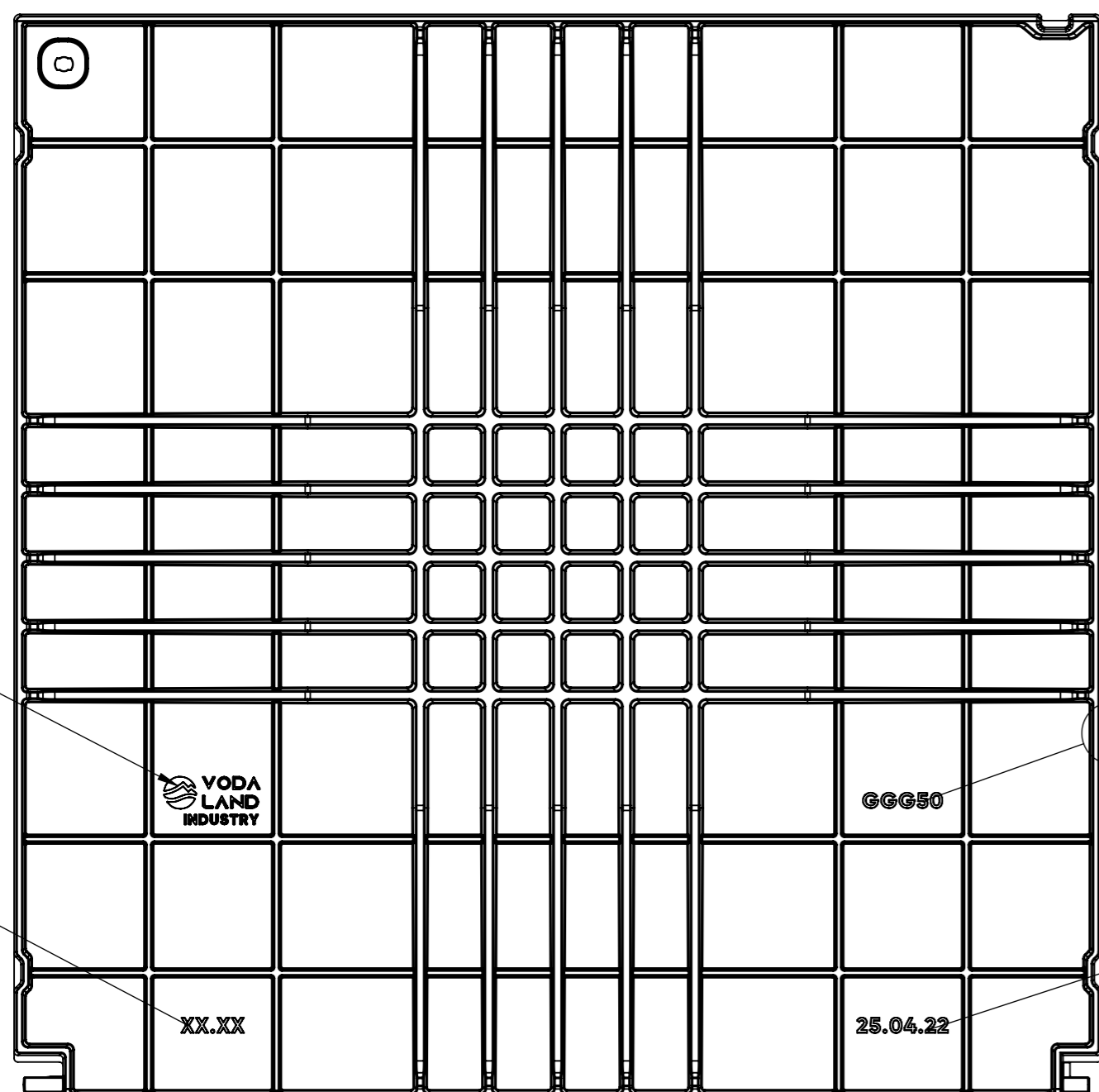
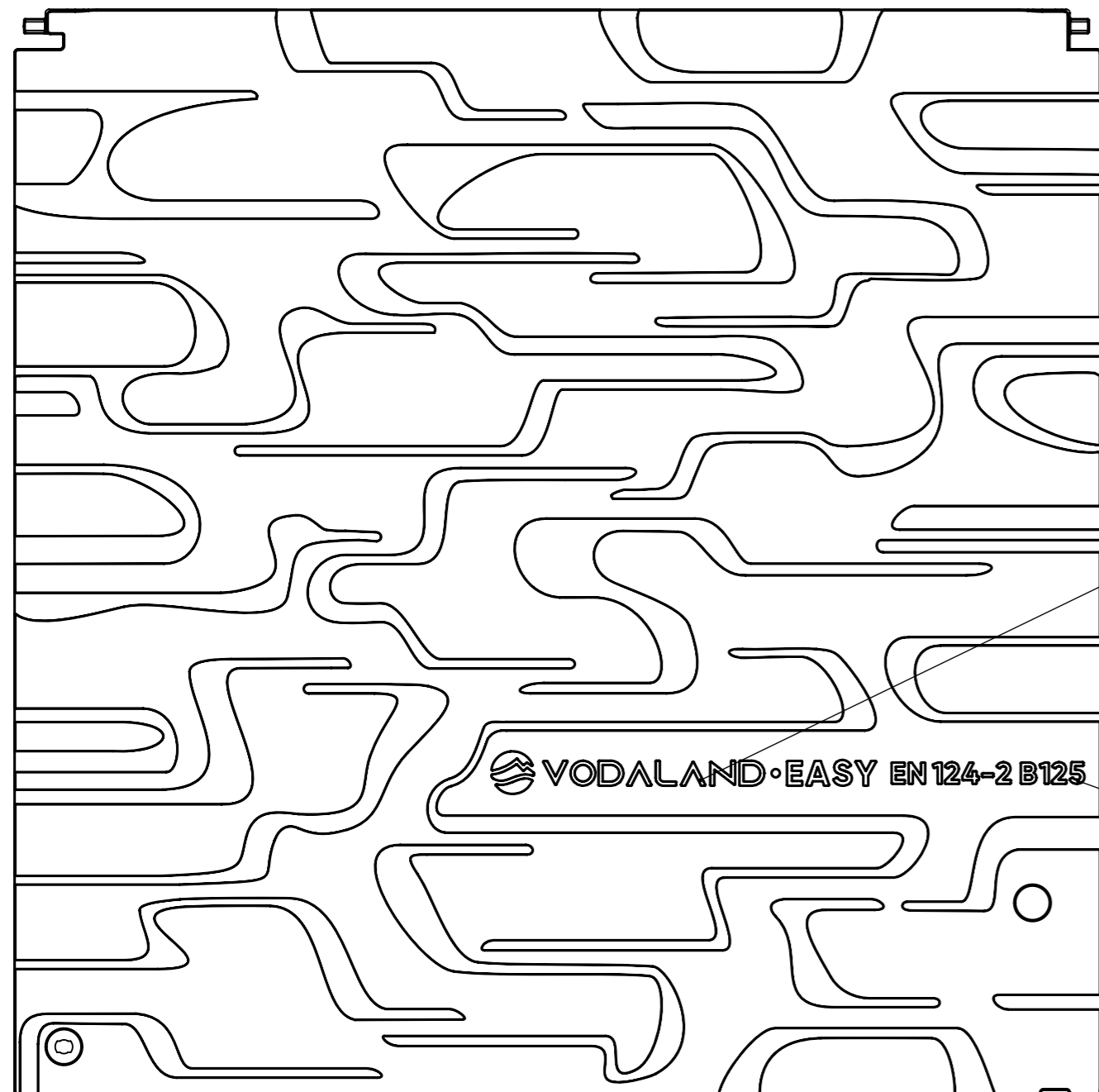
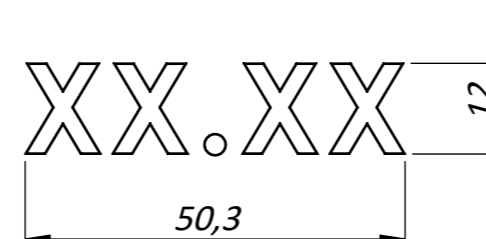
4. Material



6. Date of product (bottom)



5. Marker of date of manufacture of the hatches in the format MMY (month, year) (bottom)



1. Surface coating: bitumen mix black matt paint with anticorrosion features
2. Tolerance-EN 8062/weight +/-3%
3. Mark the date of manufacture of the hatches in the format MMY (month, year).
4. Mark the article number - EN 124 B125

UNLESS OTHERWISE SPECIFIED: DIMENSIONS ARE IN MILLIMETERS SURFACE FINISH: TOLERANCES: ISO 2768-C LINEAR: ANGULAR:				FINISH:	DO NOT SCALE DRAWING	REVISION
DRAWN	M. Vasylyk	SIGNATURE	DATE	22.04.25	TITLE: Cast iron cover of manhole 950x950 DN850 square light B125	
CHK'D	M. Kuntso				Load class: B125	
APPV'D					ARTICLE: 35459-38 c	
MFG	O. Tsyurak				A2	
Q.A	D. Negru				MATERIAL: GGG50 DIN1693	
					WEIGHT: 55.94 kg	
					SCALE: 1:5	
					SHEET 6 OF 6	